

GOING GLOBAL

ELM

TERM 6

Values:

ROAR

Be the best we can be

Special days and enrichment:

- Pride week - 1st June to 5th June – festival on 4th June
- Phonics screening check:
- Monday 8th June to Friday 12th June
- Class photos -12th June
- Arts week- 15th –19th June
- Sports week- 29th June – 3rd July
- Sports day- 3rd July
- Enterprise week- 6th July – 10th July
- Summer fayre – 15th July, 2pm
- Transition days- 16th and 17th July
- End of term – 22nd July and picnic



Homework

Spellings

TTRS – 30 games per week

Reading – 30 minutes daily

Passport to learning projects



LITERACY

In literacy this term, we will be using the text *The Lost Happy Endings*. We will be looking at different styles of writing such as poetry, non-chronological reports, letters and text featuring dialogue.

I am really looking forward to seeing their continued progress and their ideas come alive in the final versions of their writing.



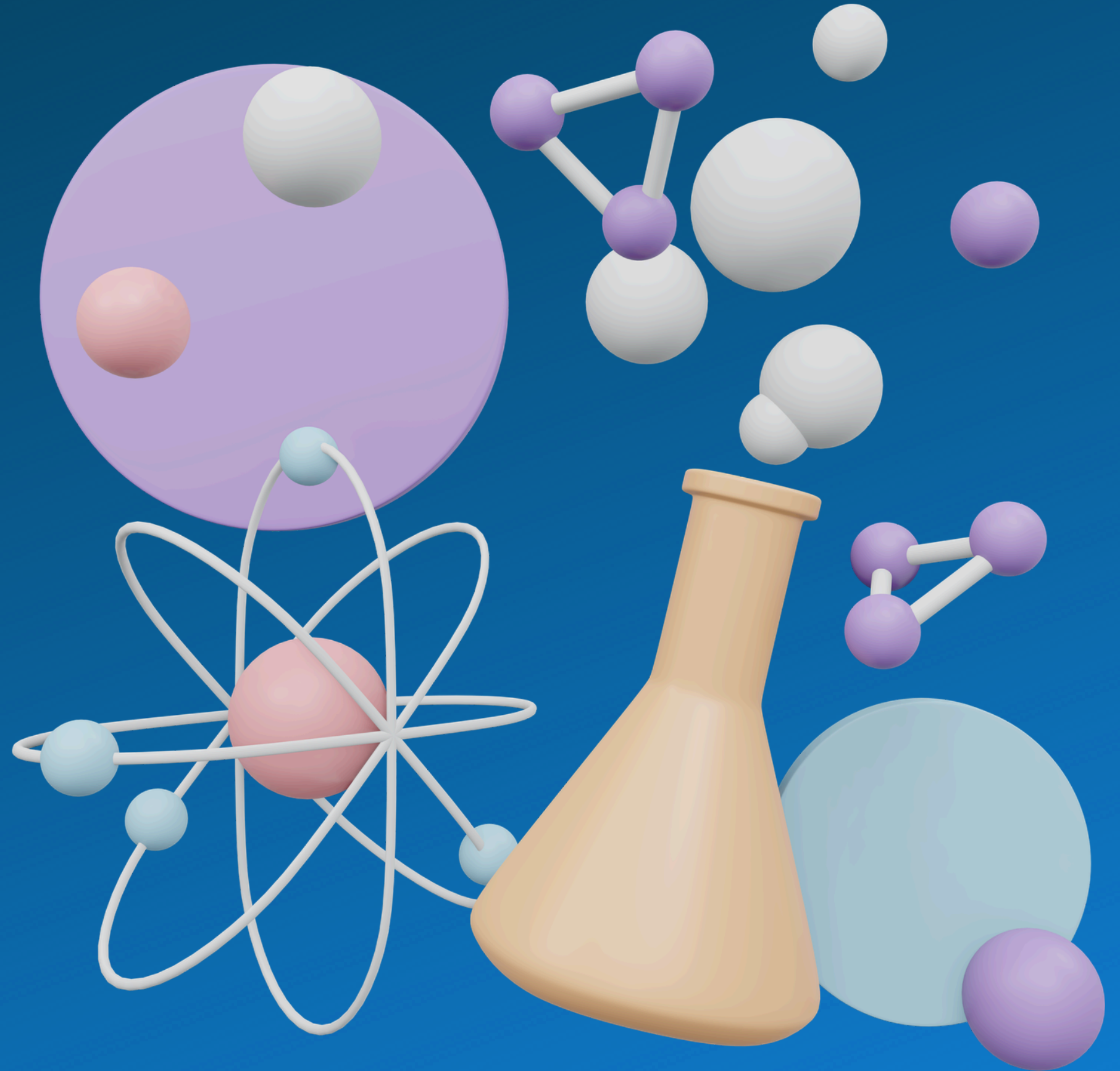
Maths

In maths this term, will be looking at 2D & 3D shapes. We will be exploring the parallel and perpendicular lines as well as lines of symmetry. We will also be looking at drawing accurate polygons using rulers correctly to measure the lengths and widths of shapes.



Science

Our topic in science this term is plants. We will be exploring how plants reproduce and grow, as well as holding experiments to find out what plants need to survive.



Topic

Our topic this term is Feeding the World (where our food comes from)



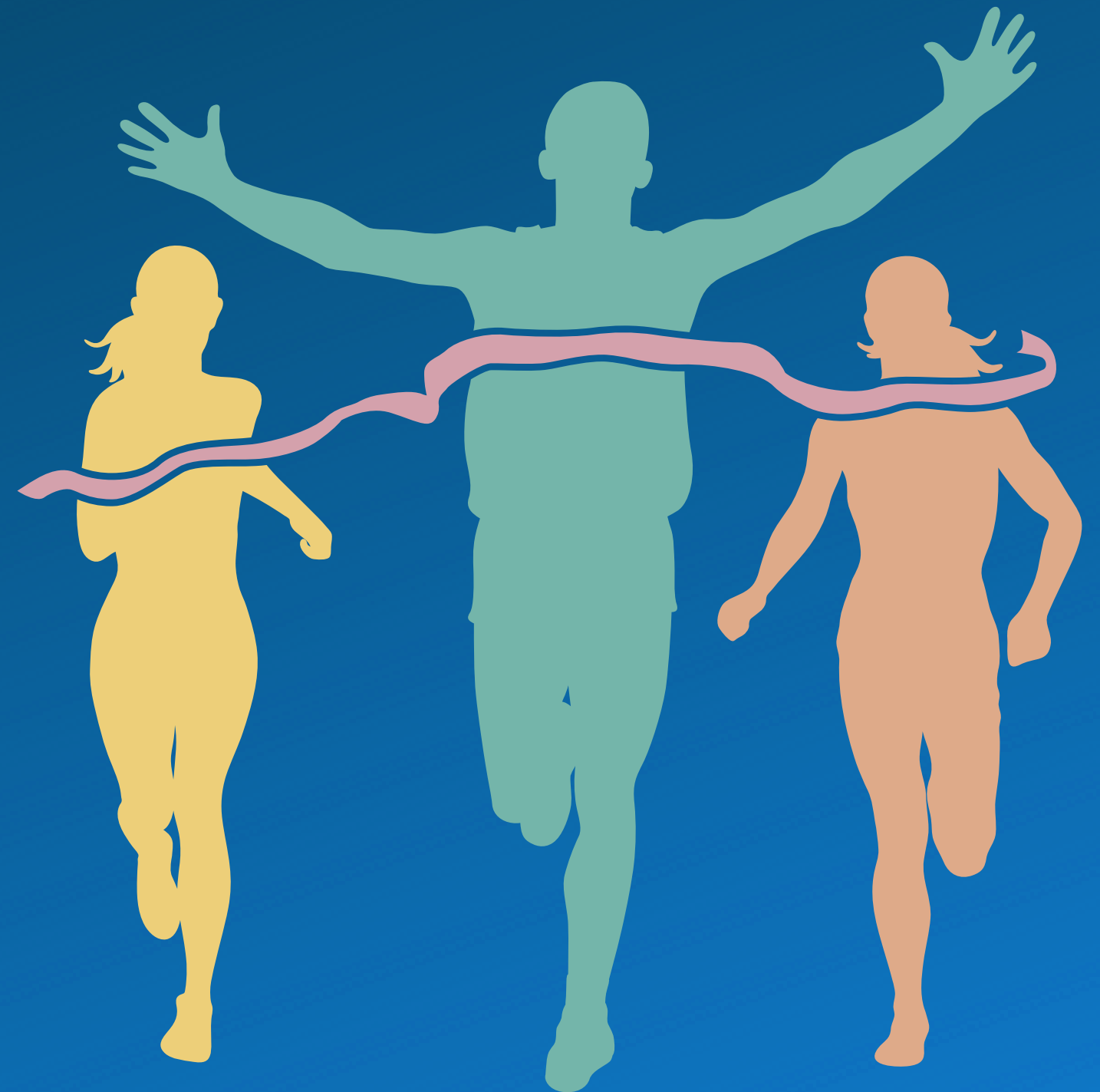
DT

Looking at the different foods
from different countries... lots of
taste testing!!



PE

In PE we are looking at Athletics
in preparation for sports day.



RE

We will be looking at why the bible is important for Christians today.



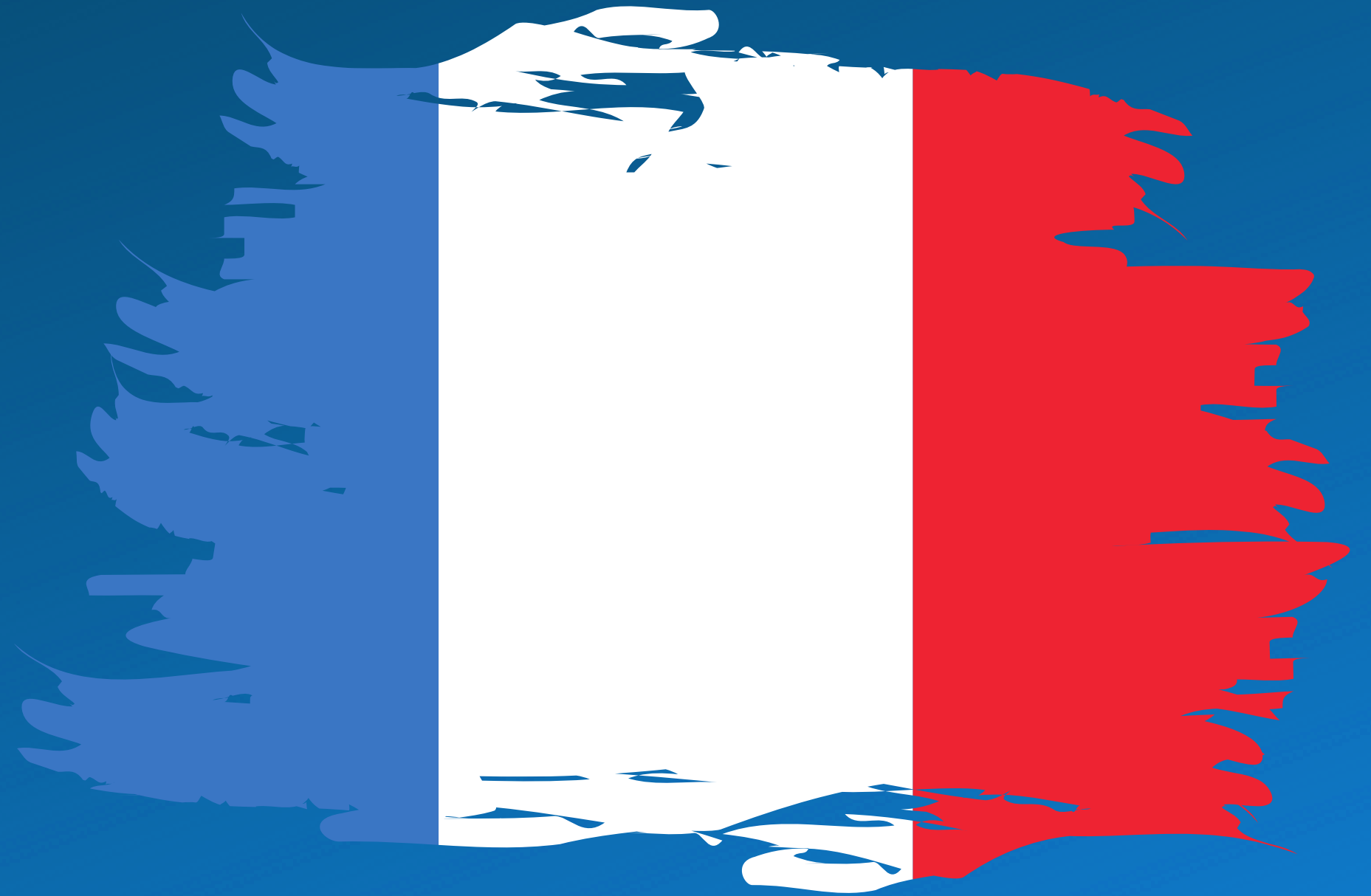
Computing

This term in computing, we will continue looking at programming, using scratch to programme a sprite, developing our own programmes and learning to fix bugs in our coding.



French

We are learning
pronounce all words
related to school.





**Thank you
for
reading!**